

MONTHLY MEMBERSHIP PROGRESS REPORT

LOCATION MISSOURI

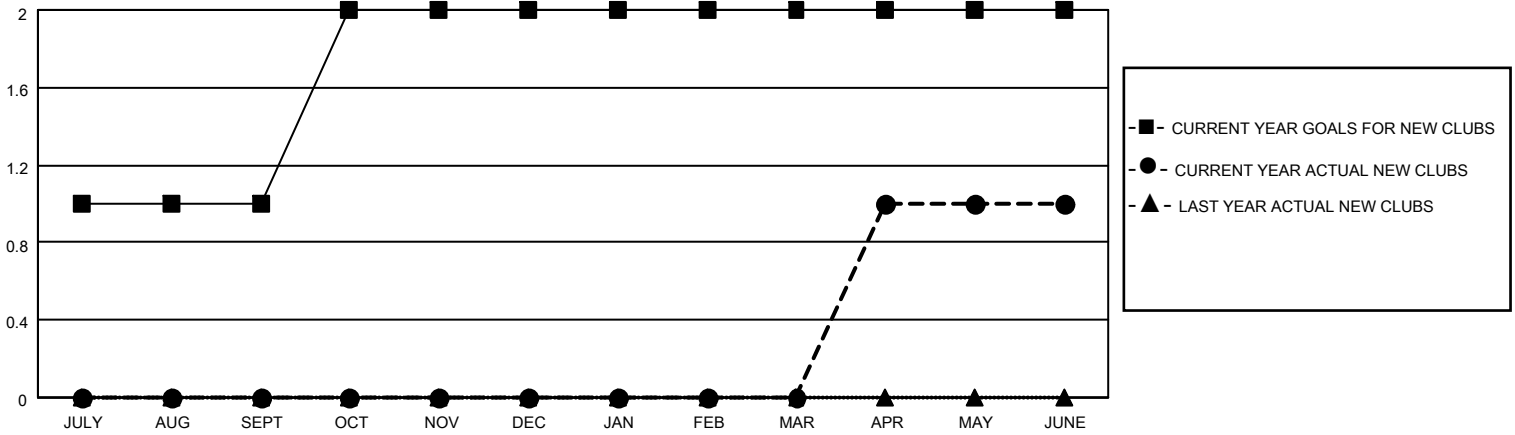
District 26 M3

Results as of: 6/30/2022

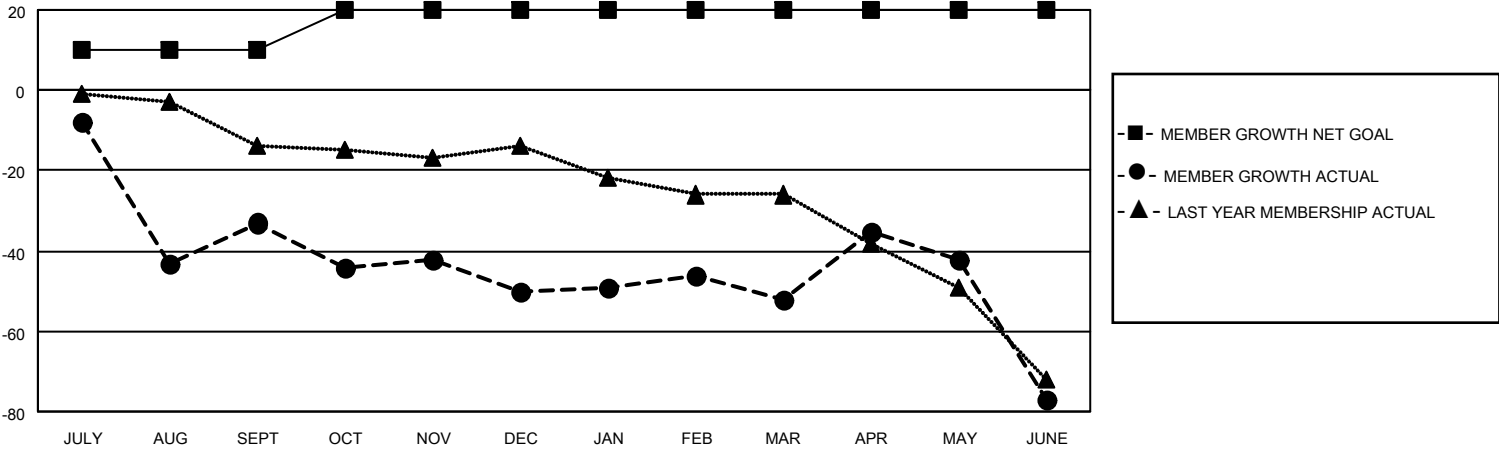
Clubs			
RESULTS FOR 2021-2022			
QUARTER	NEW CLUB GOAL	NEW CLUBS	DROPPED CLUBS
JULY/AUG/SEPT	1	0	1
OCT/NOV/DEC	1	0	2
JAN/FEB/MAR	0	0	0
APR/MAY/JUNE	0	1	3

Members			
RESULTS FOR 2021-2022			
QUARTER	MEMBER GROWTH NET GOAL	MEMBER GROWTH ACTUAL	DROPPED MEMBERS ACTUAL (including transfers)
JULY/AUG/SEPT	10	30	53
OCT/NOV/DEC	10	21	36
JAN/FEB/MAR	0	42	31
APR/MAY/JUNE	0	56	76

GOALS AND ACTUAL NEW CLUBS CUMULATIVE



GOALS AND ACTUAL MEMBERS CUMULATIVE



DROPPED CLUBS: 5

26 CLUBS OF 56 ADDED 1 OR MORE NEW MEMBERS

GENDER DISTRIBUTION

MALE	806 (73.07%)
FEMALE	297 (26.93%)
NON BINARY	0 (0.00%)
PREFER NOT TO ANSWER	0 (0.00%)

DROPPED MEMBERS

[CLICK HERE FOR CUMULATIVE MEMBERSHIP DATA](#)

DECEASED	23
CLUB CANCELLED	27
OTHER	146
TOTAL	196

TOTAL FAMILY UNIT MEMBERS	109
FAMILY MEMBERS PAYING HALF DUES	55